

DCL-02 Series Subminiature-Electric Actuator

Patent NO.: ZL200620163457.5
 Patent NO.: ZL201020214372.8
 Patent NO.: ZL201030192018.9

Opening Display Device of Adjustable Convex Type makes adjustment of opening display more convenient and precise.

The casing with good quality die Cast Aluminum alloy makes protecting performance stronger and better.



ISO5211 Standard Interface F03、F04、F05 □9×9 □11×11

Manual Operation Port

Manual Operation Handle

IP68 Water-proof Cable Connector



Three Characteristics

- Subminiature in Volume (Smaller than a pop Can)
- Super Torque (18Nm/15S)
- Super Protection Performance (Full Aluminum alloy Casing)

Main Applications:

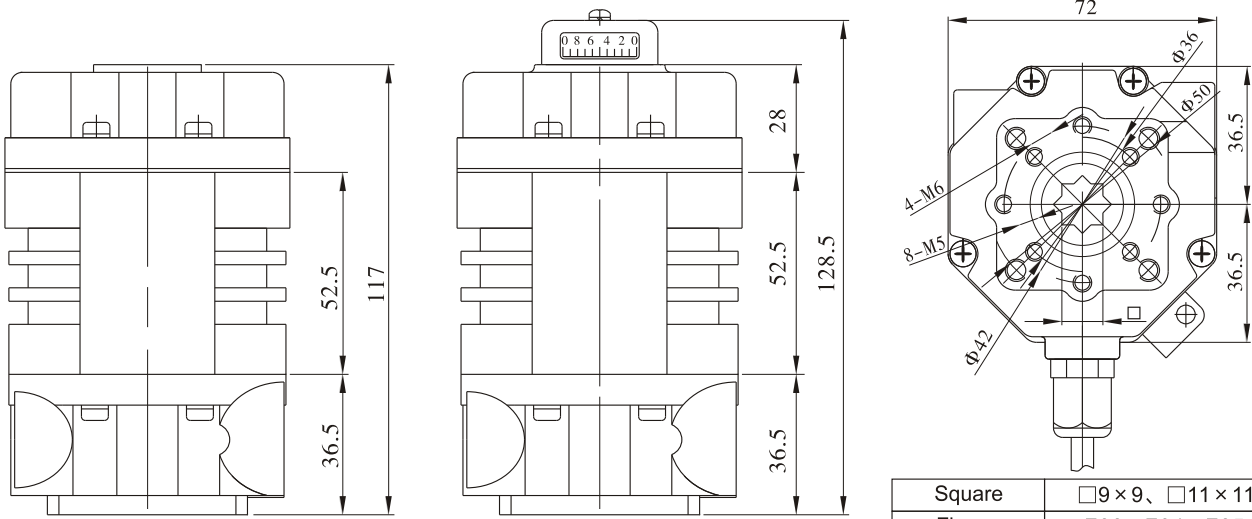
It is widely applied in various automatic operation systems, such as: level, flow, pressure control, air-conditioning systems, fire fighting systems, water treatment systems, and applied to equipment, chemical industry and food machineries. It is matched with butterfly valves with diameter less than DN40 and ball valves with diameter less than DN32.

It is suitable for many kinds of installation conditions with its super miniature in volume and any installation angle within 360°.

Warning: These series products possess three patents technology. Any copy being found will be held accountable by law!

DCL-02 Series Subminiature-Electric Actuator

Overall Dimension Drawings



Flat Type Opening Display

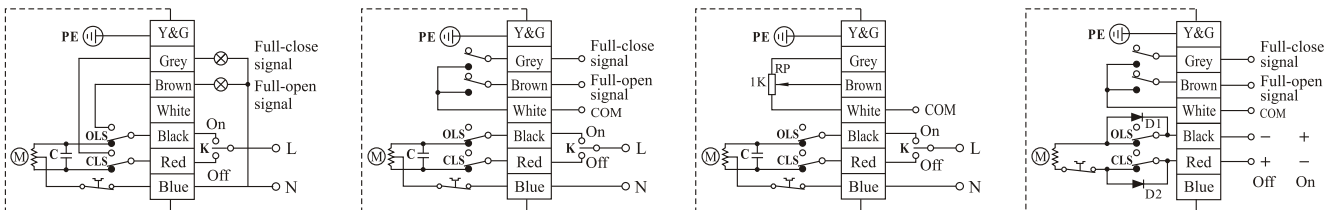
Convex Type Opening Display

Square	□9×9、□11×11
Flange	F03、F04、F05
Valve Stem	Height≤16mm

Performance Parameters

Performance Parameters	Type	DCL—02			
	Power	DC24V	AC24V	AC110V	AC220V
Motor Power		8W	6W	6W	6W
Rated Current		0.7A	1.3A	0.3A	0.15A
Standard Time/Torque		15S/18Nm			
Optional Time/Torque		7S/9Nm		60S/18Nm	
Turning Angle		0~90°			
Available Control Circuit		Type G	Types of A、B、C		
Total Weight		1.2kg			
Insulating Resistance		100MΩ/250VDC		100MΩ/500VDC	
Withstand Voltage Class		500VAC 1minutes		1500VAC 1minutes	
Protection Class		IP67			
Installation Angle		360° at any angle			
Electric Interface		7-core cable for connection			
Ambient Temperature		-30℃ ~ +60℃			
Fuse		2A	3A	1A	1A

Control Circuit



Type A: With Limit Switch (Active Contact)

Type B: With Intermediate Position Switch (Passive contact)

Type C: with 1k Potentiometer

Type G: DC Control Circuit (Passive Contact Switch)

Note: The internal circuit of actuator is shown in the dotted frame.